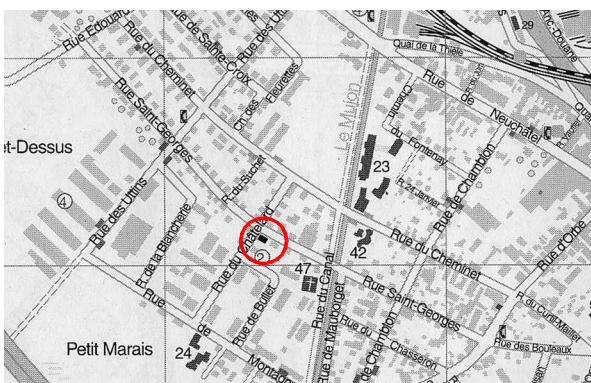


16, rue Saint-Georges 1400 Yverdon Yverdon

bureau b2 sa

APPARTEMENT 3p & 1/2
SURFACE Env. 74 m²
ETAGE 1er



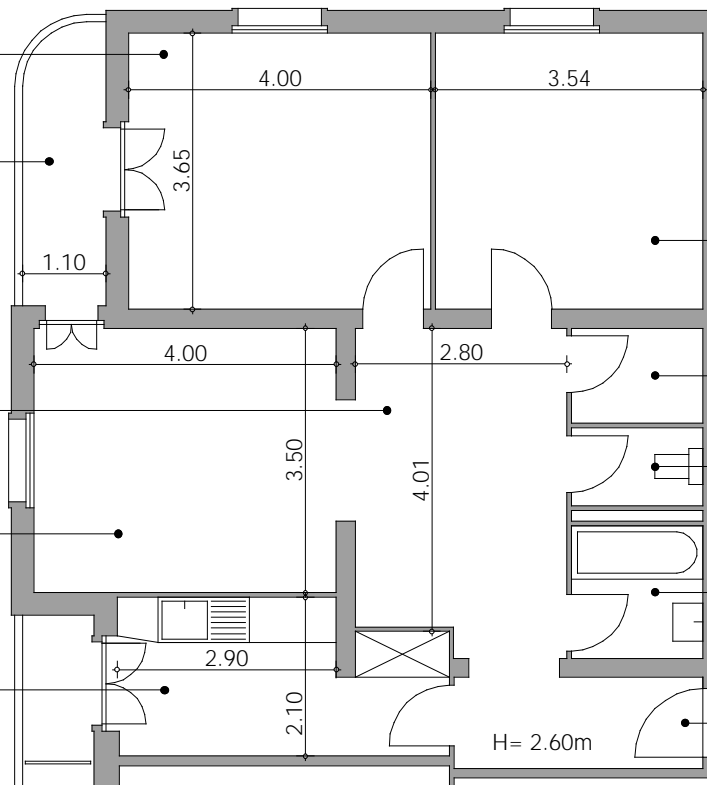
CHAMBRE
14.7 m²

BALCON

HALL
12.4 m²

SEJOUR
14.0 m²

CUISINE
8.3 m²



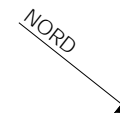
CHAMBRE
12.9 m²

REDUIT

WC

BAINS

ENTREE



RUE SAINT-GEORGES

« La Suisse »
Assurances · Versicherungen · Assicurazioni

8646.01.0015

— = 1 mètre

Dimensions approximatives. S. E. ou O. ne constitue pas un document contractuel