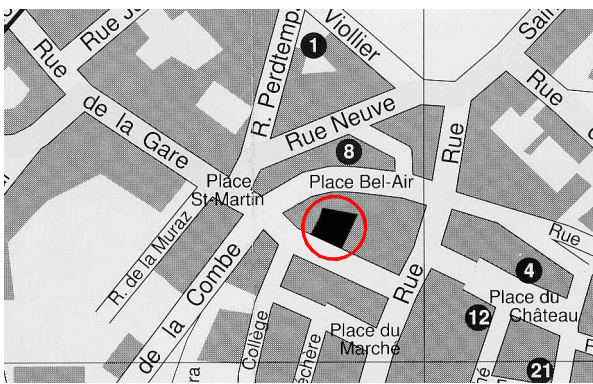


9, Rue de la Gare 1260 Nyon Nyon

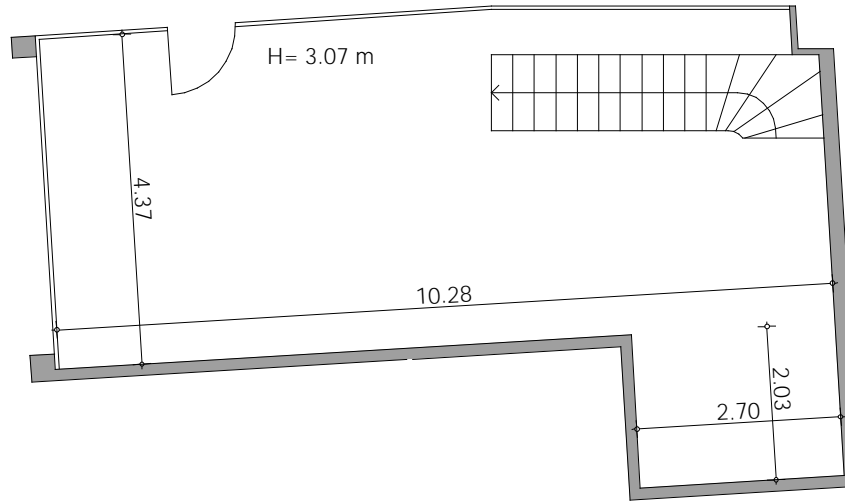
bureau **b2** sa

SURFACE COMMERCIALE

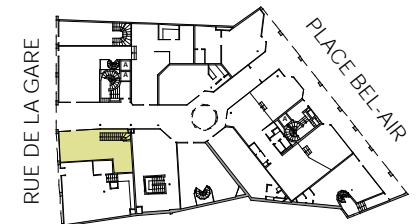
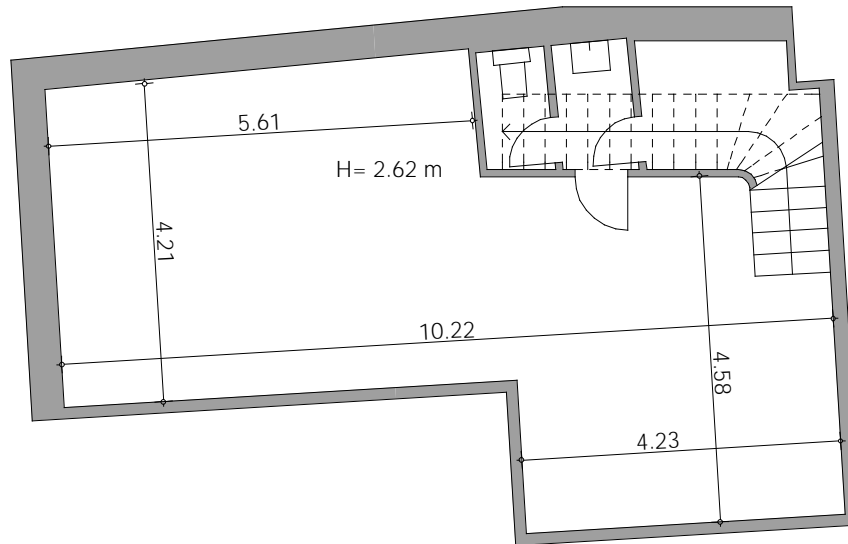
SURFACE Env. 98 m²
ETAGE Rez



REZ: env. 45 m²



1ER SOUS-SOL: env. 53 m²



« La Suisse »
Assurances · Versicherungen · Assicurazioni

20657.9002

— =1 mètre

Dimensions approximatives. S. E. ou O. ne constitue pas un document contractuel